

# Round Architectural Flood RAF LED Series



*Specification grade Round Architectural Floodlight with high light output suitable for indoor/outdoor applications.*

## Construction

**HOUSING:** is die-cast aluminum, one piece heavy duty, structurally rigid and vibration resistant. Housing is finished charcoal gray using polyester powder coat. Optional other finishes are available.

**LENS DOOR ASSEMBLY:** Minimum 1/8" thick tempered glass lens, thermal and impact resistant, sealed with doorframe and housing using extruded, memory retentive silicone gasket. Door frame is die-cast aluminum

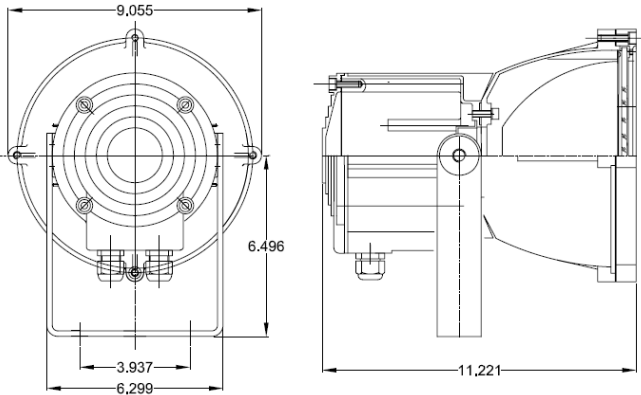
**OPTICAL SYSTEM:** For HID, a one piece precision die formed spun aluminum and finished to specular mirror surface; designed for high performance controlled beam and low glare. For LED, precision optics provide Narrow, Medium or Wide Distribution.

**ELECTRICAL:** LED Engine—Lamina Ceramics Titan (30W) or Atlas (7W) RGB or white LED engines with remote sharing driver and controller for multiple LED engines and DMX interface. High luminous flux in small footprint. Controller is designed to operate at reduced current for long life and cooler more efficient operation.

**MOUNTING:** Heavy duty yoke is provided with (2) 0.437 dia. Holes to mount on horizontal or vertical surface depending on application. Also sealed type water resistant cable is provided for the supply connections. Unless specified otherwise, 5 ft long cable is supplied. The cable is rated for outdoor use.

## Listings

ETL listed to certify **UL 1598** and **CSA C22.2 NO. 250.0**  
Suitable for indoor/outdoor use Wet or Damp Locations



## ORDERING GUIDE

MODEL		NO OF LED	LIGHT DISTRIBUTION		RGB or White		OPTION
<b>RAF3</b>	-	<b>9AT</b>	<b>MF</b>	-	<b>C</b>	-	
RAF3 - Basic Model		2TN = Two Titan RGB	MF - Medium Flood		C = RGB Color Changing		Blank = NO option
		9AT - Nine Atlas RGB	NF = Narrow Flood; MF - Medium Flood; WF - Wide Flood				V - Visor
		2TNDW - 2-Titan Daylight White	MF - Medium Flood		W - White		VS = Vertical Spread Lens;
		2TNWW - 2-Titan Warm White					HS = Horizontal Spread Lens
		2TTDW - 2-TitanTurbo Daylight White					XF = Special Finish
		2TTWW - 2-TitanTurbo Warm White					
		9ATDW - Nine Atlas Daylight White	NF = Narrow Flood; MF - Medium Flood; WF - Wide Flood				
		9ATWW - Nine Atlas Warm White	NF = Narrow Flood; MF - Medium Flood; WF - Wide Flood				