

PLAZA

Ideal for walkways, parking areas, building facades, porches, entrances, canopies, archways and signs.

- Compact fluorescent, with electronic ballast.
- Illumination may be direct or indirect.
- Flat glass lens for minimum spill light.
- Choice of black, white, gray, or bronze.
- Specular aluminum high performance reflector system.
- Field adjustable reflector and socket bracket allows illumination distribution to be tailored for facade lighting.
- Suitable for damp locations.

Lamps (Included - 4 pin compact fluorescent)

26, 32 and 42 Watt Compact Fluorescent (PLC)

For Metal Halide and High Pressure Sodium - consult factory.

Materials/Finish

Marine grade - copper free, die cast aluminum housing and wall bracket finished in black, white, gray, or bronze powder paint.

The reflectors are specular anodized aluminum and the forward throw version is reversible.

The door frame contains a heat and impact resistant tempered glass lens and is secured by four (4), M6 (metric) stainless steel socket head screws.

Installation/Mounting

A wall bracket mounting adapter facilitates easy wiring and mounting.

Standards

ETL Listed - Damp Location.

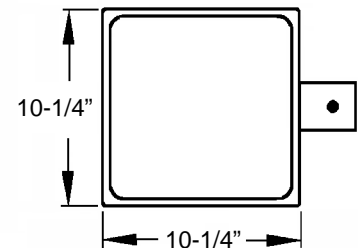
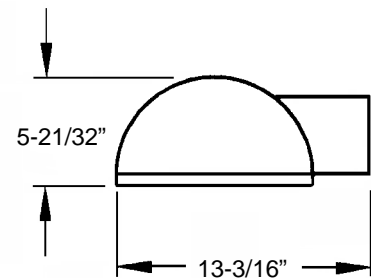
Specification

To specify state:

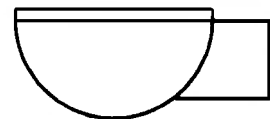
North Star Plaza series luminaire operates 26, 32 and 42W, 4-pin triple twin tube lamps with a 120 or 277V 60Hz ballast. The luminaire is completely pre-wired with a specular aluminum reflector with a die cast aluminum lens frame and it is ETL listed for damp locations and capable of starting and operating the specified lamp at 0°F (-18°C)



Downlight



Uplight



NORTH STAR LIGHTING INC.

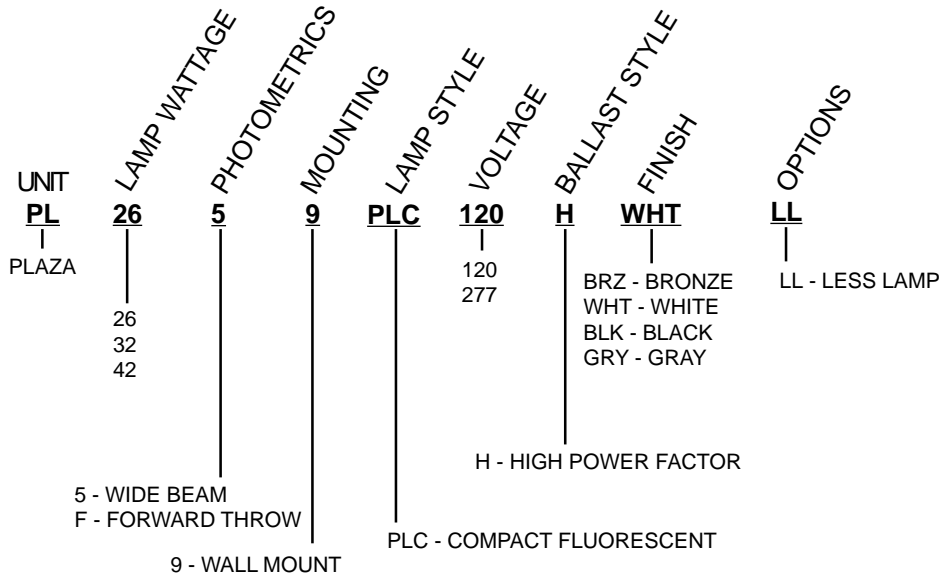
2150 PARKES DRIVE ♦ P.O. BOX 6038 ♦ BROADVIEW, ILLINOIS ♦ 60155-6038 ♦ 708-681-4330 ♦ FAX 708-681-4006

Web Site: www.nslights.com

THORN

PLAZA

ORDERING EXAMPLE (Select desired item from each column)



NORTH STAR LIGHTING INC.

2150 PARKES DRIVE ♦ P.O. BOX 6038 ♦ BROADVIEW, ILLINOIS ♦ 60155-6038 ♦ 708-681-4330 ♦ FAX 708-681-4006

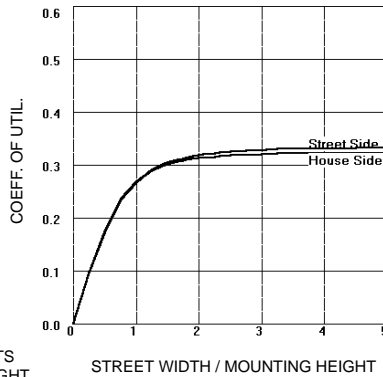
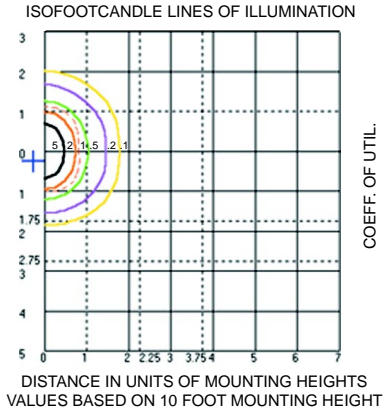
Web Site: www.nslights.com

THORN

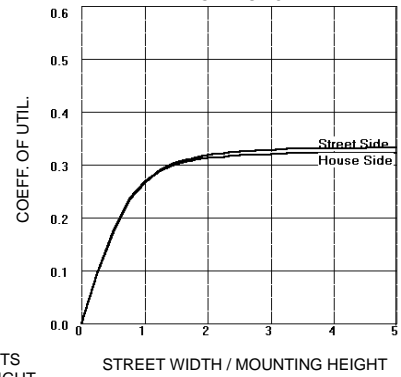
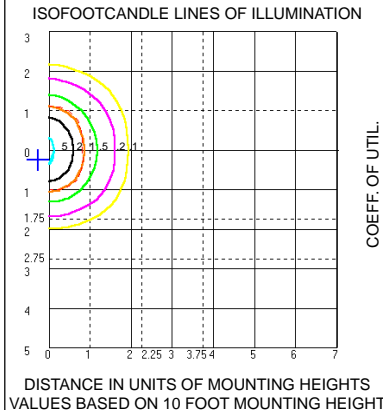
PHOTOMETRICS

FIXTURE: PL-26
 LAMP: 26 WATT TRIPLE TUBE COMPACT FLUORESCENT
 LUMENS: 1,800 INITIAL

FIXTURE: PL-32
 LAMP: 32 WATT TRIPLE TUBE COMPACT FLUORESCENT
 LUMENS: 2,400 INITIAL



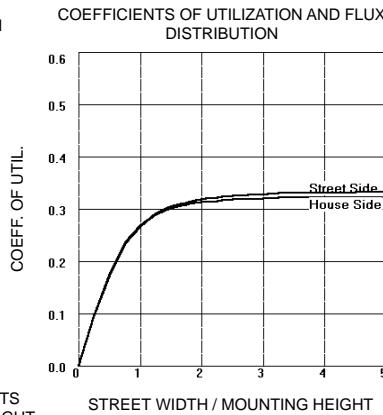
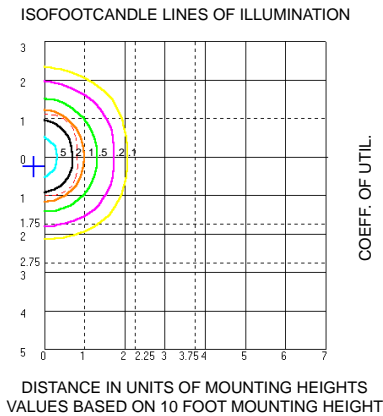
	LUMENS	PERCENT OF LAMP
DOWNWARD STREET SIDE	583.25	32.4
DOWNWARD HOUSE SIDE	600.7	33.4
DOWNWARD TOTAL	1183.95	65.8
UPWARD STREET SIDE	0	.0
UPWARD HOUSE SIDE	0	.0
UPWARD TOTAL	0	.0
TOTAL FLUX	1183.95	65.8



	LUMENS	PERCENT OF LAMP
DOWNWARD STREET SIDE	177.67	32.4
DOWNWARD HOUSE SIDE	800.93	33.4
DOWNWARD TOTAL	1578.6	65.8
UPWARD STREET SIDE	0	.0
UPWARD HOUSE SIDE	0	.0
UPWARD TOTAL	0	.0
TOTAL FLUX	1578.6	65.8

MOUNTING HEIGHT FT.	8	10	12	14
MULTIPLY FOOT CANDLES BY	1.60	1.00	0.69	0.51

FIXTURE: PL-42
 LAMP: 42 WATT TRIPLE TUBE COMPACT FLUORESCENT
 LUMENS: 3,200 INITIAL



	LUMENS	PERCENT OF LAMP
DOWNWARD STREET SIDE	1036.9	32.4
DOWNWARD HOUSE SIDE	1067.9	33.4
DOWNWARD TOTAL	2104.8	65.8
UPWARD STREET SIDE	0	.0
UPWARD HOUSE SIDE	0	.0
UPWARD TOTAL	0	.0
TOTAL FLUX	2104.8	65.8

FOR ADDITIONAL INFORMATION - CONSULT FACTORY



NORTH STAR LIGHTING INC.

2150 PARKES DRIVE ♦ P.O. BOX 6038 ♦ BROADVIEW, ILLINOIS ♦ 60155-6038 ♦ 708-681-4330 ♦ FAX 708-681-4006

Web Site: www.nslights.com

THORN