

New Products Release: Year 2002

LC-10 SERIES



North Star Lighting Inc

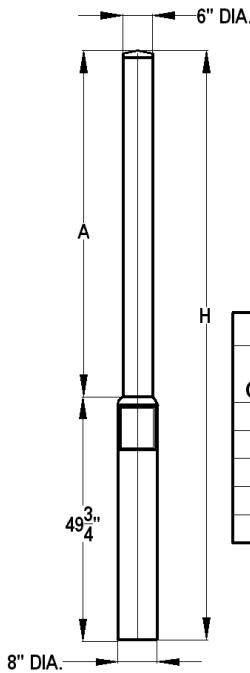
2150 Parkes Drive, Broadview, Illinois, 60155 Phone: (708) 681-4330; Fax: (708) 681-4006
Web Site: www.nslights.com

Light Columns: 8" Round

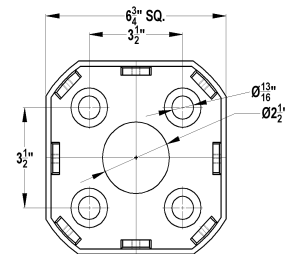
LC-10 SERIES

SPECIFICATIONS

- Architecturally pleasing and decorative contemporary style.
- Unique optical system using micro prisms of 3M films to illuminate uniformly throughout the lighted column.
- Available programmable color show suitable to any application.
- Rigidly constructed from extruded aluminum housing with cast aluminum base and decorative transition collar.
- Low glare uniformly illuminated acrylic light column.
- Lamp included.
- Modular construction for easy maintenance.
- All external fasteners are stainless steel.
- Weatherproof and durable silicone gaskets.
- UV stabilized, polyester powder coat finish.
- Meets IP55 rating conforms to IEC standards.
- UL 1598 listed for wet location indoor/outdoor use.



HEIGHT CHART		
CAT. OPTION	H in ft.	A in ft.
10	10	5'-10.5"
08	8	3'-10.5"
07	7	2'-10.5"
06	6	1'-10.5"
05	5	0'-10.5"



ORDERING GUIDE

MODEL NUMBER		LIGHT SOURCE OPTIONS					OPTIONS / ACCESSORIES		
PRODUCT FAMILY	OVERALL HEIGHT	LAMP WATTAGE	LAMP TYPE/ BASE	VOLTAGE	BALLAST TYPE	OPTION-1	OPTION-2	OPTION-3	
Basic Model									
LC									
LC = LIGHT COLUMN	10 = 10 FT 08 = 8 FT 07 = 7 FT 06 = 6 FT 05 = 5 FT	35 = 35W /39W 50 = 50W /60W 70 = 70W 100 = 100W /90W 150 = 150W 000 = LED	MME = MH-MED. HME = HPS-MED. PS = PULSE START MH MG12 = MH G12 (ELEC. BLST TME = PAR-TH-MED. LCS = LED-COLOR SHOW LCF = LED-FIXED COLOR	120 = 120V 208 = 208V 240 = 240V 277 = 277V MT = MULTI VOLTAGE LED -120V ONLY	C = CWA HX = HX-HPF E = ELECTRONIC M = MASTER LCS ONLY S = SLAVE LCS ONLY	RF = RED FILTER BF = BLUE FILTER GF = GREEN FILTER YF = YELLOW FILTER MF = MAGENTA XF = CUSTOM FINISHES: BK = BLACK BZ = BRONZE WT = WHITE SL = SILVER	FOR HID/HALOGEN ONLY	FOR LCF ONLY	

- NOTES:
1. ONLY HID UNITS ARE AVAILABLE WITH INPUT VOLTAGE 120V THOUGH 277V.
 2. ONLY HID AND TUNGSTEN HALOGEN (T.H.) UNITS ARE AVAILABLE WITH COLOR FILTER OPTIONS.
 3. ONLY LCS UNITS ARE AVAILABLE WITH MASTER & SLAVE OPTIONS TO CONNECT AND SYNCHRONIZE ONE MASTER WITH MULTIPLE SLAVE UNITS. MASTER CONTROLLER CAN DRIVE SLAVES UP TO MAXIMUM 1000 FT CAT5 TWISTED PAIR CABLE.
 4. LCF UNITS ARE OFFERED WITH CHOICE OF SINGLE COLORS AS SHOWN IN THE OPTIONS.

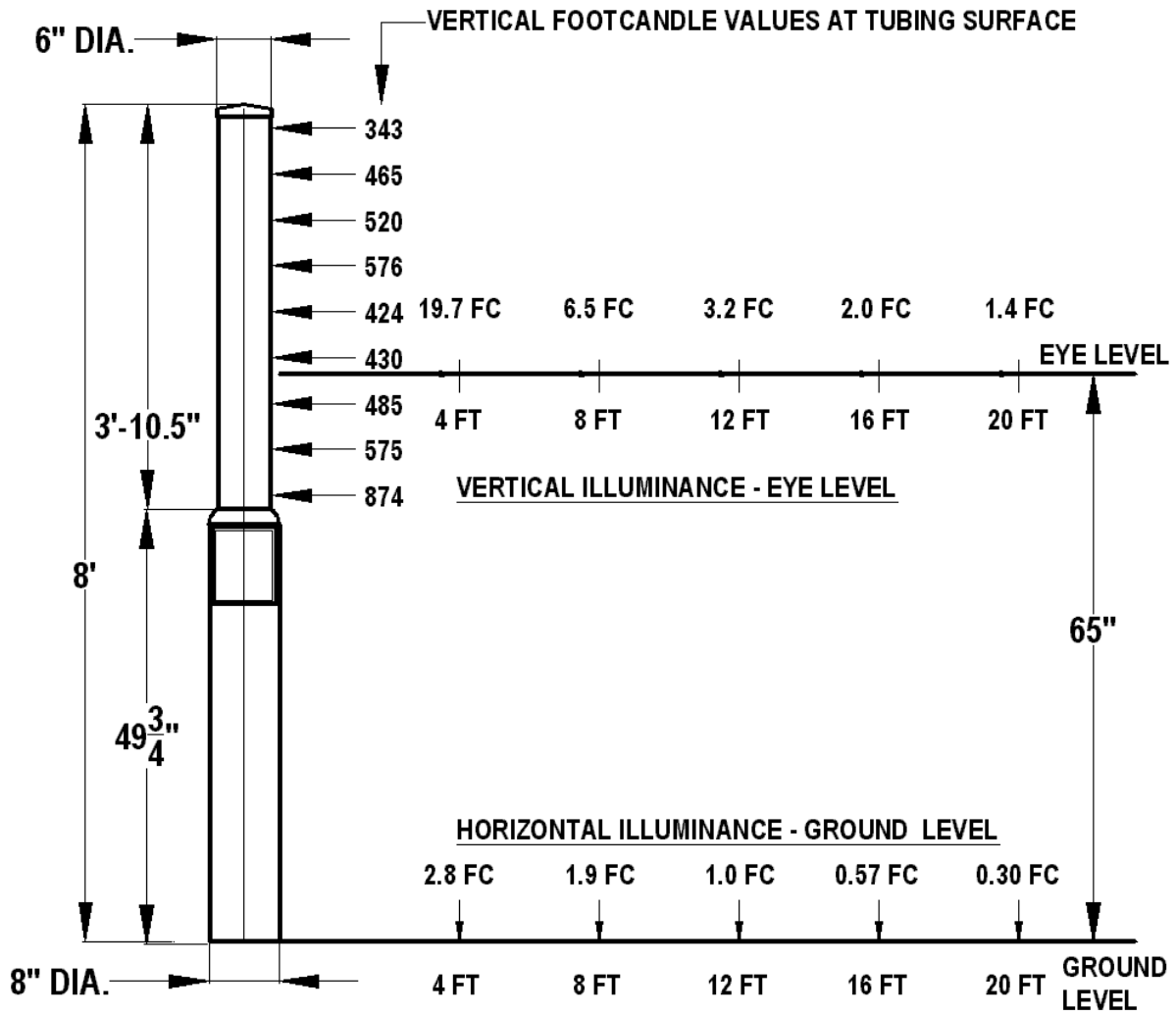


North Star Lighting Inc



2150 Parkes Drive, Broadview, Illinois, 60155. Phone: (708) 681-4330; Fax: (708) 681-4006
Web Site: www.nslights.com

PHOTOMETRIC DATA



LAMP: 150W MH G12 BASE

BALLAST: ELECTRONIC

LAMP INITIAL LUMENS: 13500



North Star Lighting Inc.

